

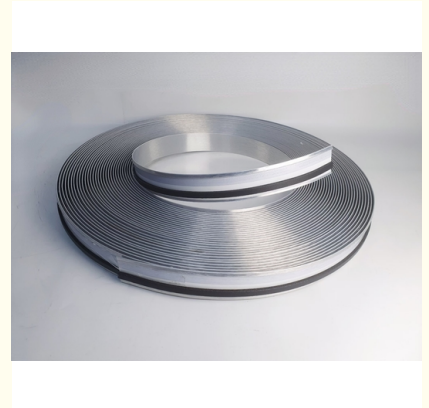
5cm / 7cm / 9cm Channelume Aluminum Long Lasting Glue Installation

Our Product Introduction

for more products please visit us on lettertrimcap.com

Basic Information

- Place of Origin: Jiangsu, china
- Brand Name: Chinaron
- Model Number: NWY-2
- Minimum Order Quantity: 1 roll
- Price: Negotiable
- Packaging Details: Carton/ Pallet
- Delivery Time: 7 working days after receiving the deposit
- Payment Terms: L/C, D/A, D/P, T/T, Western Union, MoneyGram
- Supply Ability: 50000 meters per week

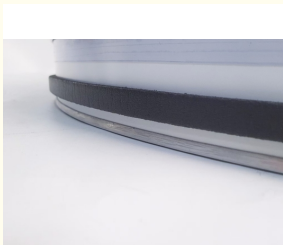


Product Specification

- Width: 5cm, 7cm, 9cm, 11cm, 13cm, 15cm
- Design: Channel Signage
- Usage: Store Neon Sign
- Material: Aluminum And PVC
- Thickness: 0.5MM
- Installation: Glue
- Length: 50Meter
- Color: White, Black, Blue, Red, Yellow, Green, Silver, Gold
- Highlight: long lasting channelume aluminum,
7cm channelume aluminum,
5cm aluminum channelume



More Images



Product Description

Product Description:

Channelume Aluminum is specifically for Channel Signage. It is a popular material for creating led backlit letter coil, which is perfect for store neon signs. The material is easy to bend and shape, which makes it ideal for creating letters and shapes that are perfect for your store signage.

Channelume Aluminum comes in a length of 50 meters, which is more than enough for most store signage projects. The material is easy to work with, and it can be cut to any length that you need. The material is also easy to install, which makes it perfect for DIY projects. Channelume Letters made from Channelume Aluminum are durable and long-lasting. They are resistant to weather and UV radiation, which means that they will not fade or crack over time. The letters are also lightweight, which makes them easy to transport and install. In summary, Channelume Aluminum is a versatile material that is perfect for store signage. It is strong, durable, and lightweight, which makes it easy to work with. The material is specifically designed for Channel Signage, and it is perfect for creating led backlit letter coil. With a length of 50 meters, it is more than enough for most store signage projects. Channelume Letters made from Channelume Aluminum are durable and long-lasting, and they are resistant to weather and UV radiation. If you are looking for a material that is perfect for your store signage project, then Channelume Aluminum is the perfect choice.

Features:

Good weather resistance
Protective film
Good processing performance
Easy to install

Technical Parameters:

Product name:	Aluminum Channelume
Product number:	NWY-2
Thickness:	0.5mm
Width:	5cm, 7cm, 9cm, 11cm
Length:	50m / roll
Color:	14 colors

Applications:

ALUMINUM CHANNELUME

- Easy to operate, seal, stick and install
- Good weatherproof, good corrosion resistance
- High quality and short delivery time





Packing and Shipping:

Product Packaging:

The Channelume Aluminum product will be packaged in sturdy cardboard boxes with foam inserts to protect the product during transit. Each box will contain the ordered quantity of Channelume Aluminum, along with any necessary accessories or screws.

Shipping:

The Channelume Aluminum product will be shipped via a reputable courier service to ensure timely and safe delivery. Shipping options and costs will be presented at checkout, and customers can choose their preferred method of delivery based on their needs and budget.

FAQ:

Q: What is the brand name of Channelume Channel Letters?

A: The brand name of Channelume Channel Letters is Chinaron.

Q: What is the model number of this product?

A: The model number of this product is NWY-2.

Q: Where is this product made?

A: This product is made in Jiangsu, China.

Q: What is the minimum order quantity?

A: The minimum order quantity is 1 roll.

Q: How long is the delivery time?

A: The delivery time is 7 working days after receiving the deposit.



CHANGZHOU CHINARON OPTO-ELECTRICAL TECHNOLOGY CO., LTD



+8617505197553



neway02@neway88.com



lettertrimcap.com

No.171, Mingxin Middle Road, Hutang Town, Wujin District, Changzhou City, Jiangsu Province, China